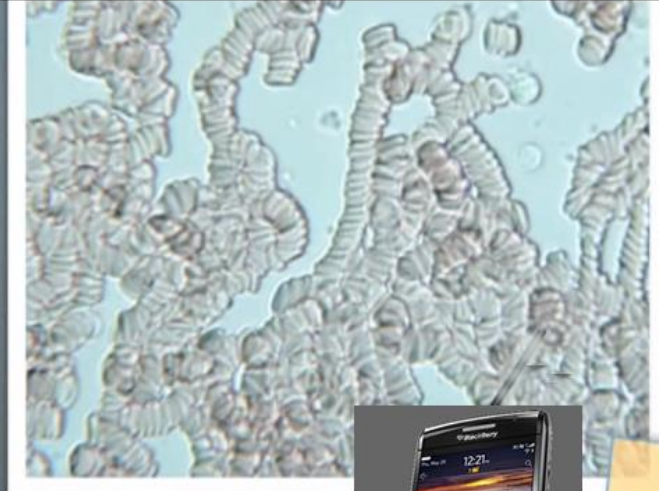
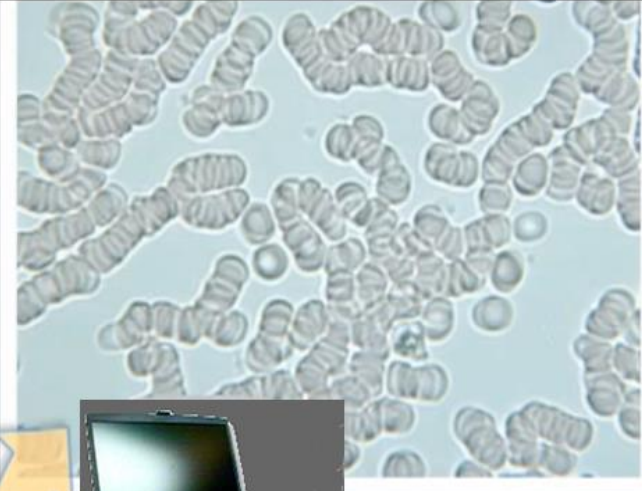


The effects of EMF & EMR

(electro-magnetic frequencies or radiation)

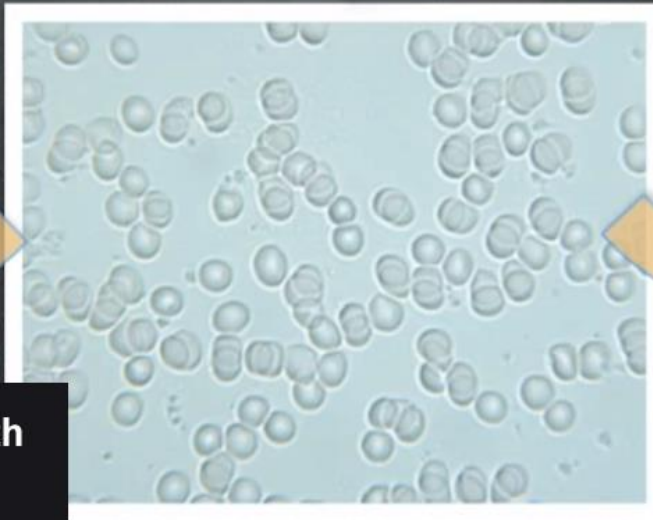
on your blood terrain



70 mins

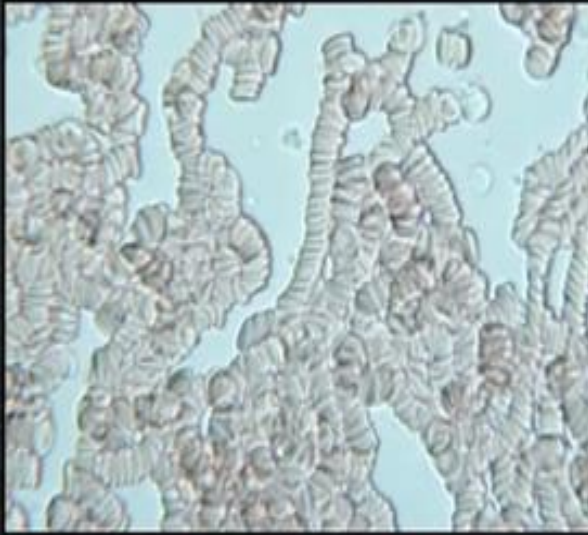


10 mins



The blood terrain
before contact with
computers or cell
phones.

Symptoms



- ➔ headache, fatigue
- ➔ difficulty concentrating
- ➔ numbness, tingling, cold extremities
- ➔ heart & blood pressure problems . . .

Consequences

- ✓ poor circulation
- ✓ lower oxygen transport
- ✓ reduced waste removal